

# ARTICULATING BOOM

## HA 43 JE



- 140° (+70°/-70°) fly jib range of motion.
- 27 ft 10 in outreach.
- 6 ft 6 in stowed height.
- 4 ft 11 in width.
- Full electric drive.
- 12 hrs operating autonomy.



## The Haulotte® advantages

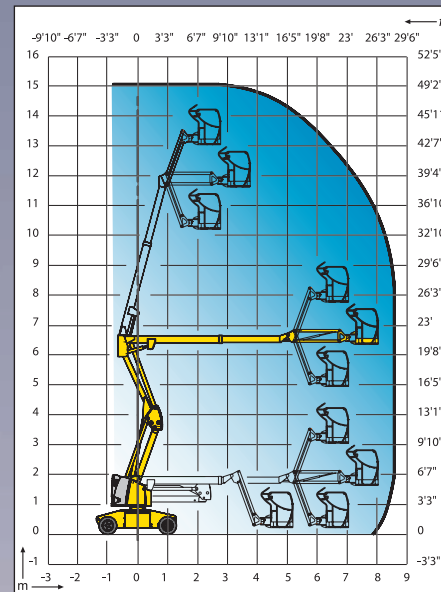
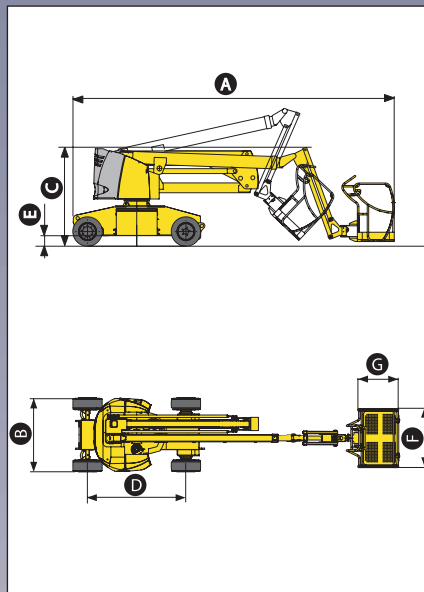
- Full electric drive
- Zero tailswing
- 6 ft 6 in stowed height for easy travel through door ways
- 12 ft 2 in short turning radius and 4 ft 11 in width allows operation in the most congested areas
- Full proportional control station
- Work platform control
- Improved safety due to load limiter in the basket
- Robust, reliable and easy to maintain

## STANDARD FEATURES

- 360 Ah traction batteries
- Battery charge indicator
- 48 V – 50 A on-board battery charger
- Sensitive control box
- 3° tilt alarm
- Non marking tires
- Outside / inside use: wind rated to 28 mph
- Free wheeling device
- Hourmeter
- Turret slewing lock pin
- Towing hooks / lifting eyes
- Manual emergency lowering pump
- 2 front wheel drive and 2 rear steering wheels
- Load limiter in cage
- Horn

## OPTIONS & ACCESSORIES

- Flashing light
- Socket (110V) in the basket
- Travel alarm
- Centralized battery filling kit
- Waterproof batteries
- Air line to cage
- Brakes remote release control box from lower control box
- Biodegradable oil
- Large basket option 59 in x 32 in



## SPECIFICATIONS

Working Height	48 ft 8 in
Platform Height	42 ft 8 in
Maximum outreach	27 ft 10 in
Up and over height	21 ft 8 in
Platform Capacity	507 lb
Fly jib range motion	140° (+70°/-70°)
<b>A</b> Length	21 ft 7 in
<b>B</b> Width	4 ft 11 in
<b>C</b> Stowed Height	6 ft 6 in
<b>D</b> Wheelbase	6 ft 6 in
<b>E</b> Ground Clearance	6 in
<b>F</b> x <b>G</b> Platform size	47 in x 32 in
Tailswing	5 in
Travel / transport length	17 ft 7 in
Travel / transport height	9 ft 2 in
Drive speed	0.4 - 3.1 mph
Outside turning radius	12 ft 2 in
Turntable rotation	350°
Hydraulic platform rotation	180°
Energy	48 V (6 x 8 V Batteries 360 Ah)
Gradeability	25 %
Non marling tires	23 x 10 x 12
Hydraulic tank	8 gal.
Total weight	16,097 lb

ANSI/SIA A92.5 and CSA/B354-4 Standards Compliance

