

HA 46 JRT HA 51 JRT



- Max. 34 ft 9 in horizontal outreach.
- 50% gradeability.
- 16 in ground clearance.
- Standard 4 wheel drive and steer.
- Smooth, proportional and simultaneous operation.



HA 46 JRT HA 51 JRT

Articulating Booms

The Haulotte® advantages

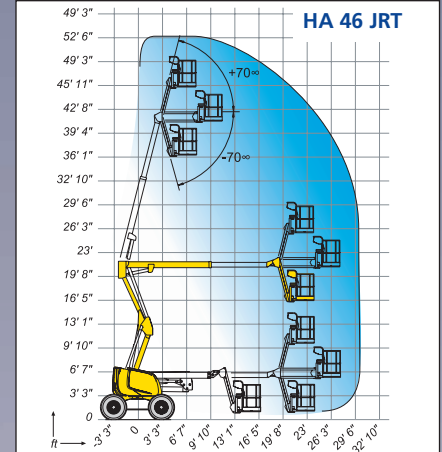
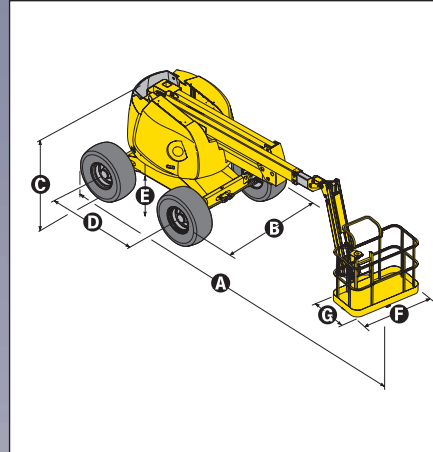
- 52 ft 3 in and 56 ft 6 in working heights
- Hydraulic differential lock and 16 in ground clearance for improved rough terrain capability
- Gradeability up to 50%
- Continuous 360° turntable rotation
- 45 sec. lift speed to full height
- Full proportional controls and simultaneous boom functions improve productivity
- Improved working area through a positive/negative articulating fly jib with 140° movement
- Zero tailswing
- 180° hydraulic platform rotation
- Improved design for travel / transport (HA 46 JRT: 17 ft 3 in transport length)
- Robust, reliable and easy to maintain design

STANDARD FEATURES

- 4 wheel drive and steer
- Rotating engine tray for easier maintenance
- Fuel tank 19 gal.
- Tilt alarm
- 12 V battery / electrical control system
- Electric emergency group in cage
- Free wheeling device
- Hourmeter
- Slewing block pin
- Towing hooks / lifting eyes

OPTIONS & ACCESSORIES

- Dual Gaz / Fuel engine (GM 1.6 L / 23 kW)
- On-board generator 3.3 kW
- 230 V/115 V - 16 A power line in cage
- 8 ft basket
- Travel alarm
- Rotating beacon
- Working light
- Catalytic purifier
- Encoded starting device
- Biodegradable hydraulic oil



SPECIFICATIONS

| | HA 46 JRT | HA 51 JRT |
|-----------------------------------|----------------------------|---------------|
| Working height | 52 ft 3 in | 56 ft 6 in |
| Platform height | 46 ft 3 in | 50 ft 6 in |
| Maximum outreach | 30 ft 10 in | 35 ft |
| Up and over clearance | 21 ft 8 in | 21 ft 8 in |
| Platform capacity | 507 lb | 507 lb |
| Fly jib range of motion | 140° (+70° / -70°) | |
| A length | 22 ft 10 in | 24 ft 11 in |
| B width | 7 ft 7 in | 7 ft 7 in |
| C stowed height | 7 ft 3 in | 7 ft 3 in |
| D wheelbase | 6 ft 7 in | 6 ft 7 in |
| E ground clearance | 16 in | 16 in |
| F x G platform size | 71 in x 32 in | 71 in x 32 in |
| Travel / transport length | 17 ft 3 in | 19 ft 4 in |
| Travel / transport height | 7 ft 3 in | 7 ft 3 in |
| Tailswing | 0 | 0 |
| Drive speed | 0.5 - 3.4 mph | |
| Outside turning radius | 13 ft 1 in | 13 ft 1 in |
| Inside turning radius | 6 ft 3 in | 6 ft 3 in |
| Turntable rotation (continuous) | 360° | 360° |
| Hydraulic platform rotation | 180° | 180° |
| Engine | Deutz Diesel 31 kW / 42 hp | |
| Gradeability | 50% | |
| Tires (foam filled and wide) | 385 / 65 - 22.5 | |
| Hydraulic tank | 26 gal. | 26 gal. |
| Fuel tank | 19 gal. | 19 gal. |
| Weight | 15,964 lb | 17,905 lb |

ANSI/SIA A92.5 and CSA/B354-4 Standards Compliance



2420604110 - Ed. 12/2005 - Copyright © by Pinguely - Haulotte - Products specifications are subject to change without notice

HAULOTTE US INC • 7135 Standard drive - Hanover - MD21076 - USA
Tel : +1 410 7124403 • Fax : +1 410 7124419 • Toll free : +1 877-HAULOTTE • e-mail: sales@us.haulotte.com

Haulotte Group - La Péronnière - BP 9 - 42152 l'Horme - France • Tél : +33 (0)4 77 29 24 24 - Fax : +33 (0)4 77 29 43 95
e.mail - haulotte@haulotte.com • web : http://www.haulotte.com