

TELESCOPIC BOOM

HB 135 JRT



- Continuous outreach control
- Max 65ft 7in horizontal outreach
- 4 wheel drive and steer
- Extending and oscillating axles



Haulotte 
GROUP

HB 135 JRT

Telescopic boom

The Haulotte® advantages

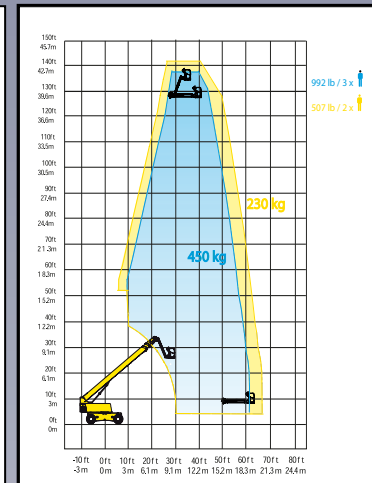
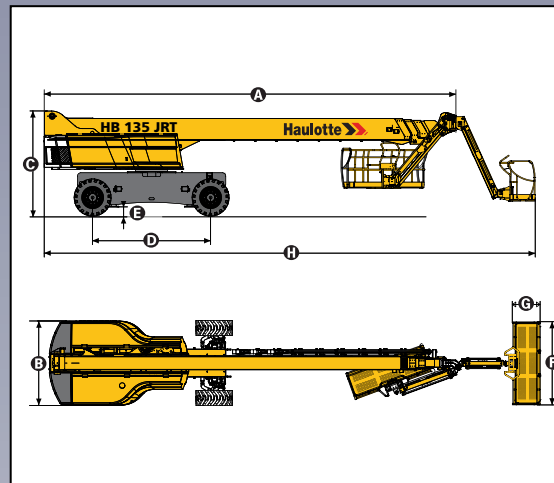
- Max 65ft 7 in horizontal outreach.
- Gradeability up to 40%
- Hydraulic differential lock and 15 in ground clearance for improved rough terrain capabilities
- Continuous 360° turntable rotation
- Full proportional controls and simultaneous boom functions improve functionality
- 180° hydraulic platform rotation
- Robust, reliable and easy to maintain design

STANDARD FEATURES

- Sectional load (992 lb or 507 lb)
- 3° tilt alarm
- Extending axles
- Oscillating axle
- Audible and visual warning for the tilt and load limit system
- Rotating engine tray for easier maintenance
- 4 wheel drive and steer
- Proportional controls
- Visual indicators on the platform control panel include: fault indicator, tilt indicator, engine low fuel indicator.
- Towing Hooks
- Safe use in winds up to 28 mph

OPTIONS & ACCESSORIES

- On-board 3.3 kw generator
- 230 V /115 V - 16 A power line from chassis to platform
- Biodegradable hydraulic oil
- Travel alarm
- Rotating beacon
- Working light
- Encoded starting device
- Compressed air hose Ø 13



SPECIFICATIONS

	HB 135 JRT
Working Height	140ft 6in
Platform Height	134ft 6in
Maximum outreach	65ft 7in
Platform capacity	507 lb or 992 lb
Fly jib vertical arc of movement	140° (+70° / -70°)
Fly jib horizontal arc of movement	120° (+60° / -60°)
Jib length	11ft 2in
A - Stowed length	40ft 4in
B - Width	8ft 4in
C - Stowed height	10ft 0in
D - Wheelbase	11ft 6in
E - Ground clearance	15 in
F x G - Platform size	96 x 31 in
H - Transport length	47ft 7in
Width (with axles extended)	10ft 10in
Travel height	10ft 0in
Tailswing	5ft 3in
Drive speed	0,2 - 3,1 mph
Outside turning radius	16ft 9in
Turret rotation	360° (continuous)
Hydraulic platform rotation	180° (-90°/+90°)
Jib rotation for transport	-160°
Engine	Perkins diesel - 62 kW - 84 hp
Gradeability	40%
Tires (foam filled)	445 / 65 - 22,5
Hydraulic tank	63 gal
Fuel tank	37 gal
Weight	45423 lb

ANSI/SIA A92.5 and CSA/B354-4 Standards Compliance



HAULOTTE US INC.

7135 STANDARD DRIVE HANOVER MD 21076 - USA
 TEL: +1 410 712 4403 FAX: +1 410 712 4419
 TOLL FREE: 877-HAULOTTE SUPPORT TOLL FREE: 877-HAULOT-S
 E MAIL : SALES@US.HAULOTTE.COM

www.haulotte-usa.com

HAULOTTE US INC.

1925 SHILOH ROAD BUILDING 3, SUITE 400
 KENNESAW, GA 30144
 TEL: +1 410 712 4403 FAX: +1 410 712 4419
 TOLL FREE: +1 877-HAULOTTE SUPPORT TOLL FREE: 877-HAULOT-S
 E MAIL : SALES@US.HAULOTTE.COM

2420320891 - Ed.12/2006 - Products specifications are subject to change without notice - non contractual document.