

## HA80JRT



- Continuous outreach control
- +70 / -70° fly jib.
- 507 lb platform capacity.
- Standard 4 wheel drive and 4 wheel steer.
- 17 in ground clearance.
- 40% gradeability.



## The Haulotte® advantages

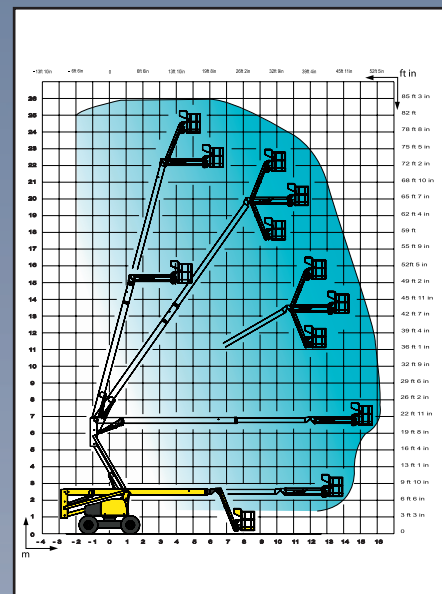
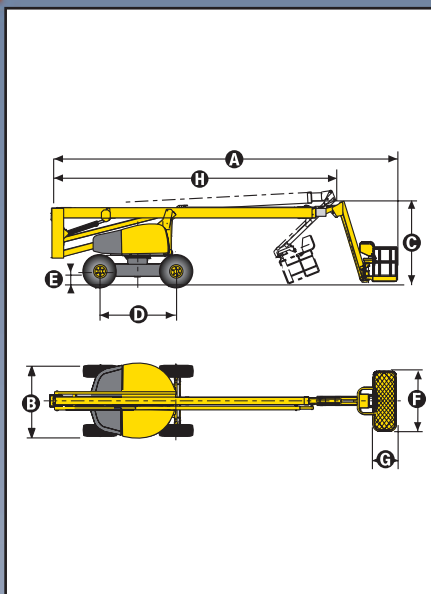
- Improved working area via a positive / negative articulating fly jib with 140° movement
- Hydraulic differential lock and 17 in ground clearance for improved rough terrain capability
- Continuous 360° turntable rotation
- Zero tailswing
- 180° hydraulic platform rotation
- Compact travel / transport dimensions
- Full proportional controls and simultaneous boom functions improve productivity
- 2.8 mph travel speed
- Robust, reliable and easy to maintain design
- Improved security due to load limiter in the basket

## STANDARD FEATURES

- 4 wheel drive and 4 wheel steer
- Load limiter in platform
- 220 V / 16 A power line to platform
- 5° tilt alarm
- Deutz air cooled diesel engine
- 12 V proportional controls at platform
- Battery electric emergency lowering system
- Free wheeling device
- Hourmeter
- Slewing block pin
- Towing hooks / lifting eyes
- 2 hooks for safety harness in platform

## OPTIONS & ACCESSORIES

- Rotating beacon
- Flashing light
- Travel alarm
- Catalytic exhaust
- Hostile environment kit
- 8 ft x 2 ft 7 in large platform
- Sand tires / Road tires
- On-board 3.3 kW generator
- Encoded starting device
- Working light
- Hot countries kit / Cold countries kit



## SPECIFICATIONS

Working height	83 ft 5 in
Platform height	77 ft 5 in
Horizontal outreach	53 ft 2 in
Up & over clearance	22 ft 4 in
Platform capacity	507 lb
Fly jib range of motion	140° (+70°/-70°)
<b>A</b> Stowed length	39 ft 4 in
<b>B</b> Width	7 ft 10 in
<b>C</b> Stowed height	8 ft 9 in
<b>D</b> Wheelbase	9 ft 2 in
<b>E</b> Ground clearance	17 in
<b>F</b> x <b>G</b> Platform size	71 in x 31 in
<b>H</b> Travel/transport length	31 ft 2 in
Tailswing	3 ft 6 in
Drive speed	0.28 – 2.8 mph
Outside turning radius	12 ft 10 in
Turntable rotation (continuous)	360°
Hydraulic platform rotation	180°
Gradeability	40%
Engine	Diesel Deutz F4 L 2011 - 57 hp - 42 kW
Tires (foam filled)	15 R 22
Hydraulic tank	40 gal
Fuel tank	40 gal
Weight	35,170 lb

ANSI/SIA A92.5 and CSA/B354-4 Standards Compliance

